

Fitness Tile Classic Flooring (FTF)

FOR FREE WEIGHT TRAINING AND CROSS FIT AREAS

TECHNICAL DATA

PROPERTY	TEST METHOD	UNITS	TEST RESULTS
Dimensional Stability	AS 2498.6	+/-1mm (23 to 70°C)	<1.0mm
Duro - Shore Hardness	AS 1683.15.2	Shore A	60-70
Density	ISO 845 Method A	Kg/m ³	950-1020
Color Fastness (UV resistance)	SAE J2020 QUV accelerated Weathering	No chalkiness or color change after 500hrs	No color change after 500hrs
Shear Strength	ISO 1827	Mpa	2.56
Compression Strength @ 20%	ASTMD 575	Mpa	1.20
Compression Young's Modulus	ASTMD 575	Mpa	0.26
Tensile Strength	ISO 39-2005	Mpa	3.03
Elongation at tear	AS 1683.12	%	50
Heat Conductivity	ASTM C518	W/mK	0.1906
Heat Resistance/thermal, resistance, K factor conditions (Nominal temp 25°C)	ASTM C518	m ² K/W	0.1283

THICKNESS 24-45mm

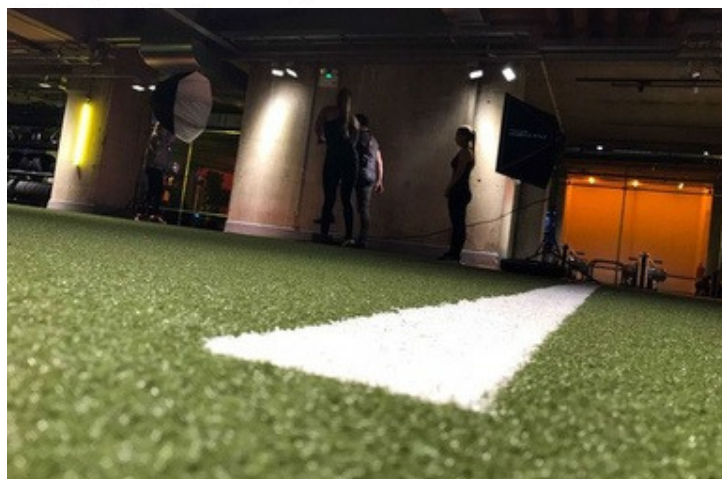


Product Description: Fitness Tile Flooring

Colour: Black, Blue, Grey + full range of other colours

Ideal for free weight training and cross fit areas

JCW Fitness Tile Flooring is available in a range of thicknesses from 15mm to 50 mm. Our rubber tile flooring is the ideal solution for easy installation in free weight training and cross fit areas. The closed surface finish provides a strong resilient surface which offers protection against injuries in the work out areas.



Product Code

Colour: Standard Black

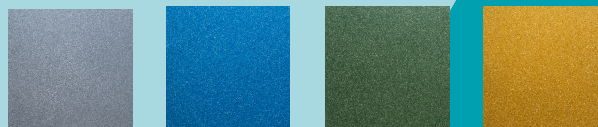
Sheet Size

FTF-EF1-20-**	15mm	1000mm x 1000mm x 15mm
FTF-EF1-20-**	20mm	1000mm x 1000mm x 20mm
FTF-EF1-20-**	30mm	1000mm x 1000mm x 30mm
FTF-EF1-20-**	40mm	1000mm x 1000mm x 40mm
FTF-EF1-20-**	50mm	1000mm x 500mm x 50mm

Full range of thickness and colours available on request

Example Colours

- ✓ Reach Compliant
- ✓ Recycled Materials
- ✓ Recycled Materials



Ancillary Products

Available on request

Gymnasiums | Sports Halls | Leisure Centres | Fitness Suites



Unit 32-34 Waters Meeting Development
Britannia Way, Bolton, BL2 2HH

Sales helpline **01204 548400**
8.30am - 5.00pm Monday to Friday

sales@acoustic-supplies.com
www.acoustic-supplies.com